

# HUMTEA™

## HumTea™ – the most complete, living diverse Tea available

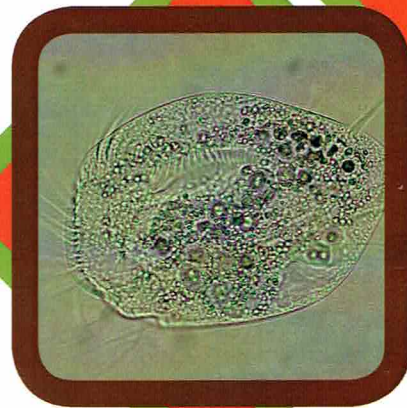
The biomechanisms in HumTea are directly related to the success of your plant's health. The mineral catalysts found in HumTea activate the mechanisms that facilitate uptake in the plant systems.

HumTea is designed to be fully activated in 24 hours, with diversity levels peaking in activity for up to two weeks. HumTea is designed to be used with many commercially available air pumps, so air bubble size is not an issue in the tea solution. The incredible diversity in HumTea provides the correct microenvironment for oxygen levels to be consistent and deliverable to the plant's rhizosphere.

As the brewing process accelerates there is a direct correlation between the beneficial community in HumTea and the amount of organic constituents in the HumTea envelope. As the biomechanisms work on the organics present in the HumTea, there is a literal succession of diversity that acts to accelerate the mineral environment the plants require to grow faster, greener, and produce higher quality yields.

This suite of diversity in HumTea provides a template for efficient nutrient cycling. What this means to your liquid nutrient environment is that it is most similar to healthy soil, but in a liquid state.

Overall HumTea is formulated to bring you the richest biodynamic environment possible in soil and hydroponic systems!



### About Cutting Edge Solutions

Our PhD directed laboratory isolates its own "natural" beneficial organisms found in the pristine soils of Northern California. Our products are always fresh, alive and never dehydrated. We have conducted more research on beneficial biology used for indoor and outdoor gardening than any of the competition. All of our products have been extensively field tested and run through a strict quality control program. This insures that Cutting Edge Solutions products function exactly the same, time after time. What this means is your bottom line is something you can rely on each and every time. No one knows more about plant biology, plant health, and integrated pest management than Cutting Edge Solutions.



**Cutting Edge Solutions**  
**Santa Rosa, CA**  
**707-528-0522**  
**707-528-0422 (fax)**  
**[cuttingedgesolutions.org](http://cuttingedgesolutions.org)**

 **Cutting Edge Solutions**



# HUMTEA™

## Usage Rates for HumTea™

### Cuttings

Rock wool can be soaked with a 50:50 dilution (HUMTEA to water) for cuttings to be rooted. Use with G-rex for best results.

### Transplanting

When transplanting, use full strength to reduce shock and stimulate root growth. Continue usage throughout vegetative period until plants are well established.

### Foliar

Spray on full strength. If a dilution is made, use water that does not contain chlorine or chloramines. If using a wetting agent, opt for one with a plant extract as its base. Plant AMP or Uncle John's Blend can be added to the solution following directions on their labels.

### Hydroponics/Aeroponics

Add 1 gallon HumTea per 50 gallon reservoir. HumTea works best with coco coir media. Other medium types will benefit by using a filter bag, containing coco coir, floating in the reservoir, or a recirculating biofilter. This provides an additional habitat for the thriving beneficial community. Always aerate your reservoir.

### Soil/Outdoors

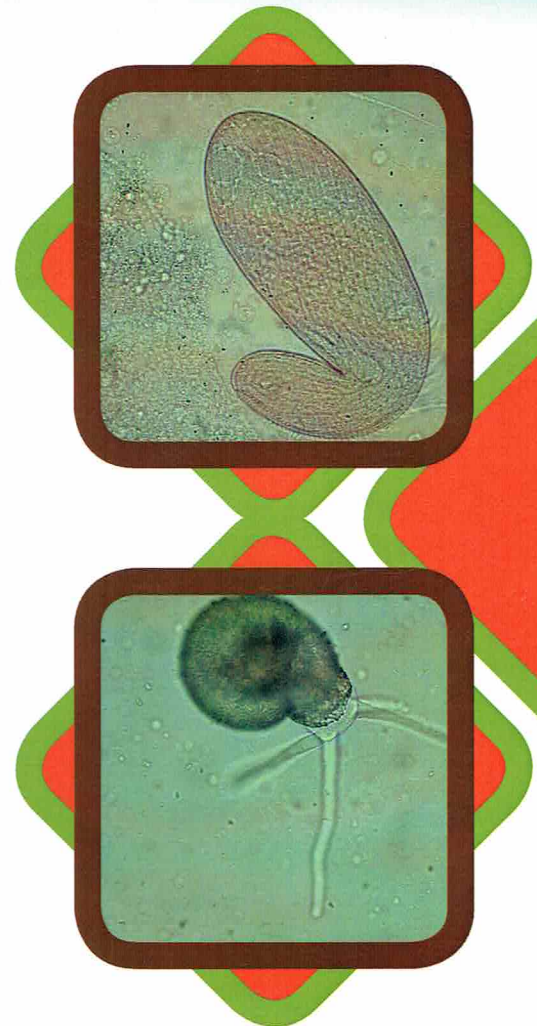
Add 2.5 gallons of HumTea to 30 square feet of bed, or add 1-2 cups HumTea per plant in 3-5 gallon pots. For large outdoor plants, 1-2 gallons can be applied directly to the plant every 1-2 weeks. HumTea is designed to work even better with G-rex and T-rex.

### Other applications

Use during flower or fruit set phase. Use as a flush (2.5 gallons HumTea per 50 gallons water) to sweeten flavors and aromas. Best results shown when used during life cycle transitions (for example, rooting, transplanting, flowering, etc.).

### Important storage notes!

HumTea must be continuously aerated if storage is to exceed 8 hrs beyond purchase to insure vitality of the beneficial community. If constantly aerated, HumTea will store for 2 weeks. Keep cool and out of direct sunlight, 60-72° F is ideal for storage. HumTea should smell like fresh topsoil: earthy and sweet.



**Cutting Edge Solutions**  
**Santa Rosa, CA**  
**707-528-0522**  
**707-528-0422 (fax)**  
**[cuttingedgesolutions.org](http://cuttingedgesolutions.org)**